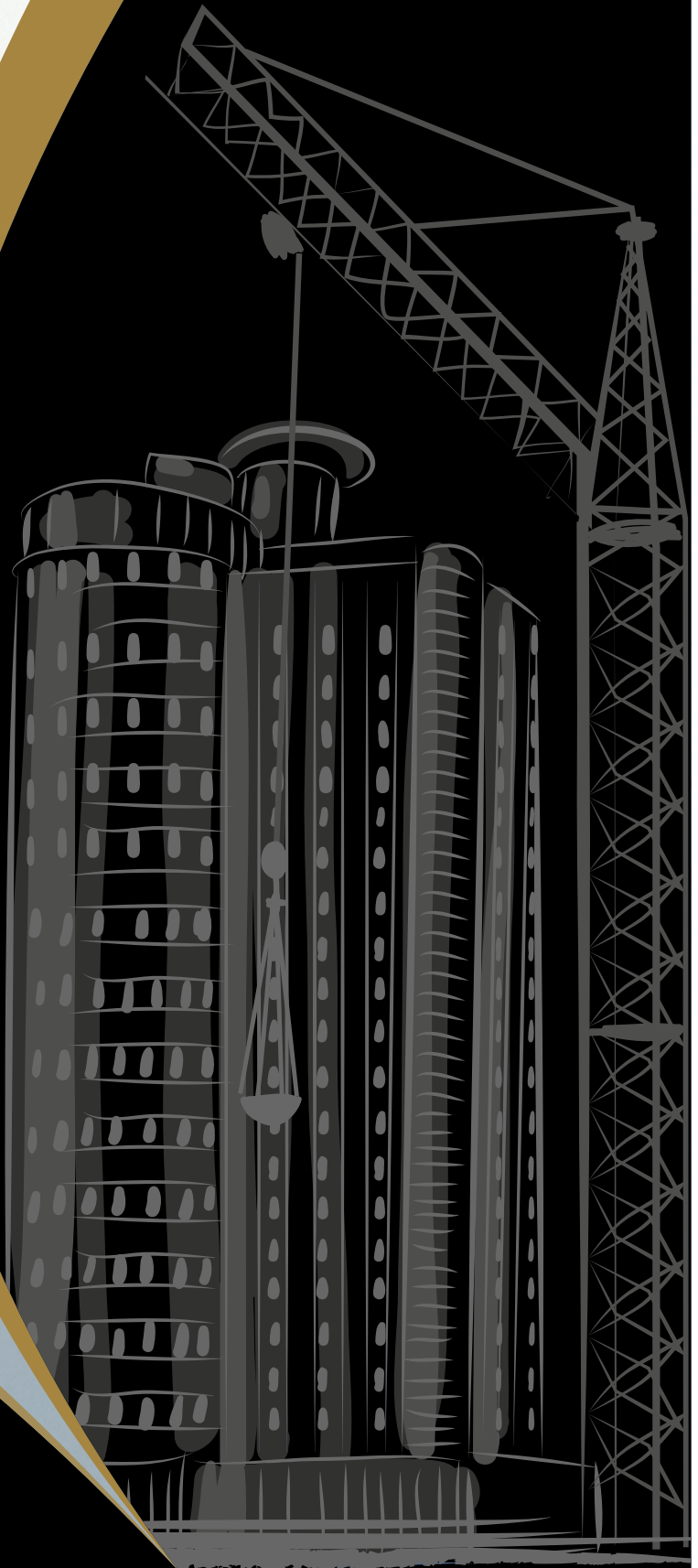




**narayan**  
— BUILDCHEM LLP —



## COMPANY OVERVIEW

**Narayan Buildchem LLP** is a leading manufacturer of high-quality construction chemicals, dedicated to enhancing the strength, durability, and performance of infrastructure projects. With a commitment to innovation and excellence, we provide a wide range of specialized chemical solutions tailored to meet the evolving needs of the construction industry.

Our products are designed to improve structural integrity, optimize construction processes, and ensure long-lasting results. Backed by a team of industry experts, cutting-edge technology, and a customer-centric approach, we aim to be a trusted partner for builders, contractors, and developers.

Strengthening foundations with quality, expertise,  
and sustainable solutions for modern construction needs







## PROCRETE NW+

PROCRETE NW+ is Silicate Based Integral Liquid Waterproofing system which improves the performance properties of plaster, mortar and concrete. It improves the cohesion, water tightness which leads to increase in compressive strength of concrete/mortar.

### Areas of Application

PROCRETE NW+ can be used as a property enhancer of concrete/mortar up to M30 Grade which can be used for external/internal plastering, brick masonry work, for concreting of slabs, beams, columns & basements to make them waterproof.

### Features & Benefits

- 10% increase in compressive strength
- Corrosion resistant
- Reduces water cement ratio
- Reduces Shrinkage
- Produces dense homogenous mixes
- Prevents leakage/seepage issues
- Enhances durability
- Provides excellent water impermeability
- High solid content which ensures better workability

### SKUs

1 Kg, 5 Kg, 10 Kg, 20 Kg, 50 Kg

### Dosage

200 ml / 50 kg bag of cement

## PRO SEALENT SBR

PRO SEALENT SBR is a styrene butadiene latex co-polymer, multipurpose bonding agent used for waterproofing, repairing of structures/concrete, bonding old concrete/plaster surfaces and new concrete/plaster.

### Areas of Application

PRO SEALENT SBR is used for waterproofing of bathroom, balcony, chajjas, sunken areas, terrace & water tanks. It is also used as a modifier in mortar and screed for repair purposes. As a bonding agent, it strongly binds new concrete/plaster surfaces to old surfaces of concrete/plaster



### Features & Benefits

- Prevents leakage/seepage issues
- High solid content which ensures better cohesiveness and excellent bonding
- High coverage and tackiness time
- Strongly binds the old & new concrete/plaster layer strongly
- Enhances durability
- Improves the properties of concrete/mortar

### SKUs

100 g, 250 g, 500 g, 1 kg, 5 kg, 10 kg, 20 kg, 50 kg

### COVERAGE

40-45 sq.ft. @ 1mm thickness (Waterproofing), 12-15 sq.ft. @ 2mm thickness (Bonding agent), coverage when used as a modifier depends on mortar/concrete mix



## PRO SEALANT EXTRA

PRO SEALANT EXTRA is an acrylic polymer based, multi-purpose bonding agent which can be used as waterproofing agent by mixing with cement, anti-corrosive rebar coating, key/priming coating, bonding agent and crack-filler.

### Areas of Application

PRO SEALANT EXTRA can be used for waterproofing of concrete substrates, for coating of old & new reinforcements to prevent corrosion, as a key/priming coat by mixing with grey/white cement over plastered surfaces & putty, as a bonding agent and for crack filling by mixing along with white cement. It is ideal for waterproofing of toilet, bathroom, terrace, Swimming Pools, basement, etc.

### Features & Benefits

- High solid content which ensures better cohesiveness and excellent bonding
- Prevents leakage/seepage issues
- Provides excellent bonding and adhesion
- Provides toughness and flexibility
- Easy to use
- Excellent anti-corrosive agent
- Excellent material for repair and renovation

### SKUs

500 g, 1 kg, 5 kg, 10 kg, 20 kg

### Coverage / kg

25-30 Kg sq.ft. @ 1mm (Waterproofing), 75 RMT @ 1mm thickness for 10mm dia bar (Anti-corrosive bar coating), 75 sq.ft. (Key/Priming coating), 12-15 sq.ft. @2 mm thickness (Bonding agent) and 85RMT @ 6mm 'V-groove' (Crack-filling).



## PRO FLEXY 2K

PRO FLEXY 2K is a two component, cement-based, acrylic emulsion polymer based elastomeric waterproof coating incorporated with high quality polymer additives and fillers for all positive side waterproofing applications.

### Areas of Application

PRO FLEXY 2K can be used for positive side waterproofing of terrace, slope roofs, balcony, domes, swimming pools, sump tanks, exterior walls of any geometry (old or new). It can be used effectively over concrete surfaces, natural stones, marble & granite bottom areas. Highly suitable for demanding applications with area greater than 10,000 sq.ft.

### Features & Benefits

- >200% elongation at tensile force of 50 kg/sq.cm. leads to excellent flexibility
- Excellent adhesion to substrate
- Reduces permeability
- Excellent breathability of membrane
- Water resistance up to 7 bars @ 1mm DFT
- Higher pot life
- Good chemical resistance against soft water & domestic waste water

### SKUs

3 kg, 5 Kg, 30 Kg

### COVERAGE

8.3-8.7 m<sup>2</sup> @ 1 mm DFT in 1 coat (Coverage is as per ideal condition)





## PRO TYLO PT111

PRO TYLO PT111 is a polymer modified, cement-based, high quality tile adhesive developed to fix ceramic tiles for both floor & wall tile fixing applications.

### Areas of Application

PRO TYLO PT111 can be used for internal, thin bed floor applications. It is recommended to be used over cementitious substrates only

### Features & Benefits

- Self-curing
- Interior applications
- Single component; easy to use
- Enhances durability
- Extended open time allowing more time for tile fixing

### SKUs

20 kg, 40 kg

### Coverage/20 kg Bag

50 sq.ft. @ 3mm (Coverage is as per ideal condition)

## PRO TYLO PT222

PRO TYLO PT222 is a polymer modified, cement-based, high quality tile adhesive recommended for fixing small format vitrified tiles for both wall & floor tile fixing applications.

### Areas of Application

PRO TYLO PT222 can be used for internal thin bed wall and floor applications. It is recommended to be used over cementitious substrates and for tile-on-tile applications.

### Features & Benefits

- Self-curing
- Interior applications
- Single component; easy to use
- Enhances durability
- Extended open time allowing more time for tile fixing
- High slip resistance

### SKUs

20 kg, 40 Kg

### Coverage / 20 kg Bag

50 sq.ft. @ 3mm (Coverage is as per ideal condition)





## PRO TYLO PT333

PRO TYLO PT333 is a cement-based, high quality tile adhesive to fix small to medium format glass mosaic tiles, Italian marble, porcelain and all translucent tiles for both wall & floor tile fixing applications.

### Areas of Application

PRO TYLO PT333 can be used for both internal & external, thin bed wall & floor applications. It is recommended to be used over cementitious substrates and can also be used for tile-on-tile applications. It is recommended to be used with Pro Sealant SBR for challenging applications.

### Features & Benefits

- Self-curing
- Interior & exterior applications
- Single component; easy to use
- Enhances durability
- Extended open time allowing more time for tile fixing
- Can be used with Pro Sealant SBR for external & challenging applications
- High slip resistance

### SKUs

20 kg

### Coverage / 20 kg Bag

50 sq.ft. @ 3mm (Coverage is as per ideal condition)



## PRO TYLO PT444

PRO TYLO PT444 is a polymer modified, cement-based, high quality and high strength tile adhesive recommended for fixing large format tiles, glass mosaic tiles, natural stones and thin tiles for both wall and floor tile fixing applications.

### Areas of Application

PRO TYLO PT444 can be used for both internal & external, thin bed wall & floor applications. It is recommended for fixing large format natural stones, tiles and for tile-on-tile applications of large format vitrified tiles. It is also suitable for applications of tiles over dry walls

### Features & Benefits

- Self-curing
- Interior & exterior challenging applications
- Single component; easy to use
- Enhances durability
- Extended open time allowing more time for tile fixing
- High slip resistance
- Suitable for varied substrates
- Flexible adhesive which can withstand low to medium vibrations

### SKUs

20 kg

### Coverage / 20 kg Bag

50 sq.ft @ 3mm (Coverage is as per ideal condition)





## PRO TYLO PT444W

PRO TYLO PT444W White is a polymer modified, white cement-based, high quality and high strength tile adhesive recommended for fixing large format Italian marble, translucent tiles, glass mosaic tiles for both wall and floor tile fixing applications.

### Areas of Application

PRO TYLO PT444W White can be used for both internal & external, thin bed wall & floor applications. It is recommended for fixing large format natural stone, tiles and for tile-on-tile applications of large format vitrified tiles. It is also suitable for applications of tiles over dry walls.

### Features & Benefits

- Self-curing
- Interior & exterior challenging applications
- Single component; easy to use
- Enhances durability
- Extended open time allowing more time for tile fixing
- High slip resistance
- Suitable for varied substrates
- Flexible adhesive which can withstand low to medium vibrations

### SKUs

20 kg

### Coverage/20 kg Bag

50 sq.ft. @ 3mm (Coverage is as per ideal condition)

## PRO COREFIX

PRO COREFIX is an epoxy-based, one-pack system specially formulated to achieve leak-free bore packing. It consists of moisture insensitive resin, hardener, selected filler & backer rod, provides fool proof bonding between PVC /CPVC /Iron pipes and concrete. It can be used for grouting/sealing gaps of pipe vents in bathrooms, toilet, balconies, roofs, fountains and artificial lakes etc which when applied properly, it serves as an excellent waterproofing system for bore

### ADVANTAGES



EXCELLENT  
BOND STRENGTH



EXCELLENT  
VIBRATION  
DAMPENING



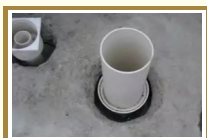
HIGH  
ENDURANCE



SELF-LEVELLING

- Excellent bond strength with various surfaces
- Self-Levelling
- High Compressive strength
- Higher endurance
- Excellent Vibration Dampening Properties

### AREAS OF APPLICATION



### AVAILABLE PACKING







# PRO TYLO TG

PRO TYLO TG is a single component, white cement-based, pigmented, ready to use joint filling grout incorporated with high quality polymer additives and fillers. It is a self-curing grout having excellent tensile adhesion strength with the base substrate both for horizontal and vertical applications.

## Areas of Application

PRO TYLO TG can be used for joint filling of tiles, marbles, granite and natural stones of tile joint up to 6mm x 6 mm.

## Features & Benefits

- Reduces water absorption
- Single component; easy to use
- Reduces shrinkage
- Self-curing
- Enhances durability
- Gives uniform colour finish

## SKUs

1 kg

## Coverage / kg

85RMT @ 6mm x 6mm joints



# PRO TYLO EP

PRO TYLO EP is an epoxy grout specifically designed to enhance aesthetics and performance. It is suitable for use with ceramic tiles, vitrified tiles, glass mosaic tiles, designer tiles and natural stone.

## Areas of Application

Restaurants, Hotels, Kitchens, Bathrooms, Lobbies, Swimming Pools, Showrooms



## Advantages:

Good aesthetic appeal, Stainfree, Strong & durable, Chemical & temperature resistant

## Coverage:

Varies with tile size and grout width

## Packaging:

Net Weight: 1 Kg, 5 Kg, 20 Kg.  
Factory proportioned kit consisting of three conveniently packed components - Part-A (Resin), Part-B (Hardner), Part-C (Filler)

## Colour:

Available in All colours With Glitter & Without Glitter

## Compliance:

Meets the following standards

- ANSI: A118.3
- EN 13888: Rg2
- VOC: Very low



## SS CLEANER

PRO CLENZA Stainless Steel Cleaner Leaves a Protective barrier that resists fingerprints and about to keep your products Shining like new.

### Areas of Application

- Stainless steel appliances • Tap & Shower • Kitchen-appliances • Bike Part • Sinks
- All types of SS Items

### Features & Benefits

- Leaves a Brilants, Streak Free Shine
- Protective Coating resists Fingerprints & repels dust & dirt
- Remover finger prints, smudges Residue and Grease

### SKUs

250 ml, 400 ml.



## OIL STAIN REMOVER

OIL STAIN REMOVER Oil Cleaner Removed Oil, Smudges, Residue & Grease. It leaved Protective Coating Resists Fingerprints & Repels Dust & Dirt.

### Areas of Application

- Kitchen Chimny • Gas Stove • Exhust Fan • Kitchen Oil Tiles

### Features & Benefits

- Easy To Use
- Non - Hazardous
- Bio Degradable
- For Regular Use

### SKUs

250 ml, 400 ml.



## SOLAR PANEL CLEANER

PRO CLENZA Solar Panel Cleaner Specially Formulated to Clean all types of Solar Panels Without Carving aluminium rails and mounting Apparatus, to oxidise or abrade.

### Areas of Application

- Solar Panel Cleaning



### Features & Benefits

- Bio Degradable
- Effective Cleaner
- Rinses Clean Without Hard Water Spotting
- Solvent Free or voc
- pH Neutral-Non Caustic

### SKUs

1 Ltr, 5 Ltr, 50 Ltr.



## TILES CLEANER

PRO CLENZA TILES CLEANER is a fast acting based cleaner for regular cleaning of dirt and stains on tile surfaces. PRO CLENZA is designed for daily maintenance of tiles. It is ideal for interior and exterior use.

### Areas of Application

Unglazed Ceramic Tile, Glazed Ceramic Tile, Vitrified Tile, Porcelain Tile Glass Tile



### Advantages:

- Cleans dirt and removes stains
- Easy to use
- Fast acting

### Coverage:

Depends on porosity of the substrate.

### Packaging:

500 ML, 1 Ltr, 5 Ltr





## PRO PLASTO

PRO PLASTO is a self-curing, cement-based, high performance surface finishing material consisting of high quality polymer additives, graded sand and fillers for thin bed/coat applications. It is highly suitable for direct application over smooth concrete surfaces without Cracking and requires no curing after application.

### Areas of Application

PRO PLASTO can be used for thin coat plastering on inner and outer walls. It can also be used effectively on block walls as well as concrete surfaces. Highly recommended over mivan finishes, smooth concrete areas without any hacking of the surfaces. Ideal for well-prepared walls with maximum thickness of plastering in the range of 3-6 mm.

### Features & Benefits

- Self-curing
- Excellent adhesion & least rebound
- Convenient to apply
- Reduces water absorption
- Well graded sand & additives ensures consistent quality
- Enhances durability
- Uniform and smooth finish to walls
- Negligible wastage
- Faster completion of work
- Less usage of water

### Coverage / Bag

100 sq.ft. @ 3mm

### SKUs

40 kg

## ACC BLOCK JOINT

ACC BLOCK JOINT is a versatile thin jointing mortar for thin bed applications. It is specially designed to provide stronger and durable bonding between the blocks with optimum adhesive strength.

### Areas of Application

BLOCK JOINT is recommended to be used for masonry wall preparation for joining all types of Autoclaved Aerated Concrete Blocks and fly ash bricks.



### Features & Benefits

- High tensile adhesion strength at joints
- Thin bed joints
- Economical
- Self-curing
- Excellent bonding strength
- Higher coverage
- Faster completion of work due to convenience in application

### Coverage / 40 kg Bag

210-230 sq.ft. for a block of size 600 x 200 x 75 (in mm)

### SKUs

40 kg



## FOUNDED XP2

FOUNDED XP2 is a cement-based, non-shrink, expanding, polymer enriched, high performance, high early strength, high quality binder developed by using special polymers, additives and selected fillers for precision grouting applications.

### Areas of Application

FOUNDED XP2 is recommended for grouting of foundation base plates, heavy machinery foundations, high strength beds, micropiles, pile caps, shear wall bond beams, foundation of turbines, compressor, boilers, feed pumps, etc.; anchoring of wide range of fixings, bolts, heavy structural post, etc.; manufacturing of high strength pavers and block; repair of concrete paths, RCC surfaces, etc.; precision grouting where it is essential to withstand static & dynamic loads.



### Features & Benefits

- Excellent compressive strength
- Ready-to-mix single component product
- Self-compacting in nature
- Non-shrink, expandable grout
- Excellent pot life
- Enhances durability
- Easy-to-mix
- Provides higher density
- Helps in precise grouting
- Minimal wastage

### Yield / 40 kg Bag

19-20 L @ 15% w/p ratio

### SKUs

40 kg; Normal & Flowable

### Design Strength

80 Mpa

20X12



## PRO FLOOR MIX

PRO FLOOR MIX is a polymer modified, cement-based, pre-mixed, high strength mortar specially formulated for multi-purpose floor screed applications. It provides a smooth and hardened finish.

### Areas of Application

PRO FLOOR MIX is suitable for terrace area as final levelling screed for warehouse, garage or work shop floors; as underlayment for marble and large tile floorings. It is an ideal levelling material for uneven concrete floors.

### Features & Benefits

- Excellent adhesion
- Excellent compressive strength
- Well graded sand & additives ensures consistent quality
- Ready to use mortar
- Negligible wastage
- Faster screed applications from 20mm to 50mm thickness in layer
- Enhances durability
- Easy application
- Economical

### Coverage / 40 kg Bag

Light Duty 3.5-4.5 kg / m<sup>2</sup>,  
Heavy Duty 5.5-6.5 kg / m<sup>2</sup>

### SKUs

40 kg

### Design Strength

25 Mpa

## RUST REMOVER



**RUST REMOVER** is a single component liquid that removes rust and temporarily prevents further rusting of steel structures by providing a passivating coat.

### Areas of Application

Removal of mortar, plaster runs, droppings, stains from brickwork, concrete surfaces, and hardened concrete from tools, machinery and equipment, or rust and mill scale from steelwork

### APPLICATION PROCEDURE

- **Cleaning brickwork** : Small trial area should be cleaned with suitable RUST REMOVER should be selected and rubbed.
- **Cleaning large items of equipment** : Liberally apply to the deposits by a soft broom and allow to soak overnight.
- **Cleaning small tools** : Use as a dip. The tools should be soaked overnight, then taken out and washed with clean water to remove all loosely adhering materials
- **Cleaning concrete floors** : In Pre-wet the floors use a stiff bristle broom, brush the affected areas with RUST REMOVER

### ADVANTAGES

- Prolong life of steels
- Makes steel surface cleaner to take primers
- Ease in application

### SKUs

1 Ltr, 5 Ltr, 10 Ltr, 20 Ltr.

## PRO KAWACH

**PRO KAWACH** is a revolutionary single-component roof waterproof topcoat coating. This innovative product combines waterproofing and heat insulation in one application. Formulated with Acrylate PU hybrid emulsion technology and reinforced with nanofibers, it offers superior performance and lasting protection.

### Areas of Application

- All exterior masonry surface subjected to water ingress
- Building roofs / terraces, parapets sunshades and exterior wall areas

### APPLICATION PROCEDURE

- **PRO KAWACH** properly before using it and apply using brush on prepared surface in uniform coats

### ADVANTAGES

- High elongation and film thickness allows cracks bridging ability of up to 0.8 mm thickness Efflorescence, algal & alkali resistance
- Protection against carbon dioxides diffusion to improve life of a building Strong adhesion to masonry substrates

### SKUs

1 Kg, 5 Kg, 10 Kg, 20 Kg.





## TILES SPACERS



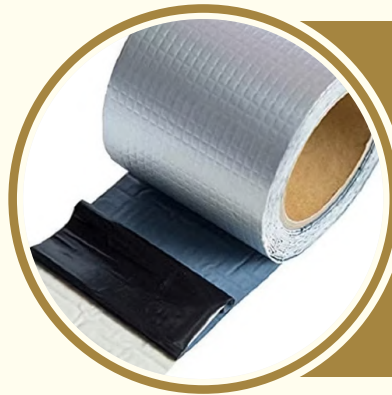
★ 2 mm ★ 3 mm ★ 4 mm ★ 5 mm  
★ 6 mm ★ 8 mm ★ 10 mm ★ 12 mm

SKUs 100 PIC

### APPLICATION AREA

- For sealing frames & skylights, parapets, glass & plastic structure
- For protecting: metal, plastic, asbestos cement, roofs and coverings in general
- For repairing: tiles, gutters, metal pipes, metal plate or asbestos cement roofs

★ 2" ★ 4" ★ 6"



## POLYMERIC MEMBRANE

### APPLICATION AREA

- Concrete blocks, Railway sleeper, manhole covers & tiles
- Roads & pavements
- Slabs, Footings, Foundation, walls and tanks
- Bridges & dams
- PCC & RCC plastering

### APPLICATION PROCEDURE

- The recommended dosage of fiber resa PROCRON is 1 pouch in 50 Kg of Cement

SKUs 85 Gm.

## PROCRON (FIBER RESA)



### APPLICATION AREA

- Areas near water bodies where hydrostatic pressure exist
- To repair patches of floors, ceiling and rendering walls
- Toilet bathroom and sunken portion

### APPLICATION PROCEDURE

- Cut the mesh with the help of knife in required length and width and place in the required areas where is necessary.



## FIBER GLASS MESH

45 GMS / 80 GMS / 145 GMS



**nARAYAN**  
— BUILDCHEM LLP —

Cleaners

Light Weight  
AAC Block  
Mortar

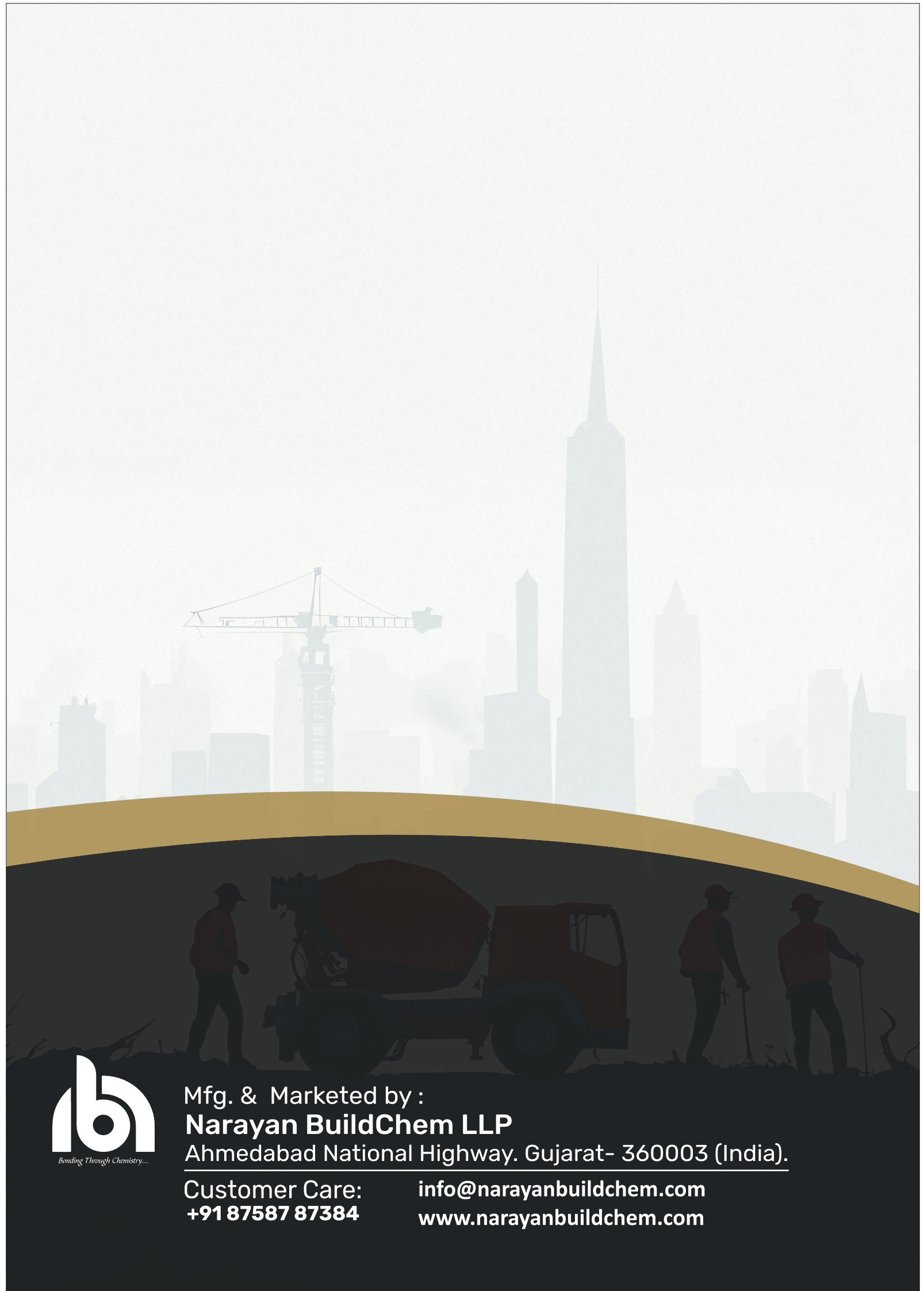
Water Proofing

Tile Adhesive  
& Tile Grout

Repair &  
Rehabilitation

Plaster &  
Mortar

Industrial &  
Precision Grout



Mfg. & Marketed by :  
**Narayan BuildChem LLP**  
Ahmedabad National Highway. Gujarat- 360003 (India).

Customer Care: **+91 87587 87384**  
[info@narayanbuildchem.com](mailto:info@narayanbuildchem.com)  
[www.narayanbuildchem.com](http://www.narayanbuildchem.com)